



# Sharnford Weekly Newsletter



"Many hearts make our School Nourishing, flourishing and fruitful."

[www.sharnfordprimaryschool.com](http://www.sharnfordprimaryschool.com)

Friday 13th February 2026

## MESSAGE FROM MRS BOYD-HOPE

It was a lovely way to end the half term today with our wellbeing ambassadors deciding on a cheeky non-uniform day! We also wore our scarves as part of Mental Health week – see later in the newsletter for photos.

We hope you have a lovely half term and we look forward to seeing our families back again on Monday 23rd February.

## Celebrations

A fantastic well done to our Sharnford Superstars: Bea, Autumn and Olivia for demonstrating our Christian Values.

Well done to Miles, Emily, Amber and Max for their achievements outside of school.



## 1<sup>ST</sup> WEEK BACK



### **MONDAY** –

Choir

### **WEDNESDAY**

Y1/2 Sparx session

Y5/6 Dodgeball Tournament

### **THURSDAY**

Maths Club in school hours

## ECO SPARKS

This last half term Mrs Hopkins and her Eco Sparks group have been working hard to get us all switched off! Today they presented some of their work and made a super video to remind us all to switch off and save! See their video on our [Facebook page](#).



## This Week's Worship...



Looking in



Looking Out



Looking Up



We have been lucky this week and had two of our worships led by outside visitors! On Wednesday Open the Book told the story of John the Baptist and how we are all special in God's eyes.

On Thursday Mrs Berry led worship on the theme of 'joy' and told the story of The Lost Coins. The children loved having both visitors this week and participated so well.

*"I am the vine and you are the branches. If you stay joined to me, and I to you, you will produce plenty of fruit." John 15:5*

## "The Breakfast Club" with BBC Radio Leicester

We had such a blast this week when Jorgia from BBC Leicester came to interview us for their radio show: 'The Breakfast Club'. We shared our favourite memories and funny moments. We then played Beat the Teacher with Miss Spence before choosing Miss Love for our pupils' pet! 🐾 The show will air on February 23rd!





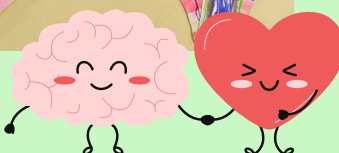
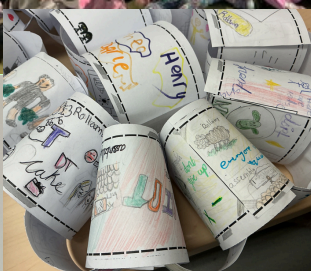
# Mental Health Week and Wear your SCARF to school day



This week the children have spent time in class thinking about belonging and 'their place'. We have made our own islands showing places where we belong, have created whole school belonging chains and today we wore our scarves!

Our wellbeing ambassadors attended their second lot of training at Enderby Leisure Centre where they shared their ideas, listened attentively to other schools and collected new ideas to try next term. They even had time for a slushy and a play in the soft play - they assured Miss Spence it was good for their mental health! 🤗🧠

We also managed to squeeze in some staff wellbeing time too, with Miss Spence beating us all soundly at bowling!



## Join Our Talent Pool

Let us know you are interested in working with us by joining our [Talent Pool](#).



### Half Term Break - 16th to 20th February 2026 - School re-opens on Monday 23rd February

Monday 23 <sup>rd</sup> February 9.15am - 11.30am *Weekly every <b>Monday</b> until 23.03.26	1:1 Singing lessons with Into the Spotlight
Monday 23 <sup>rd</sup> February 11.45am - 12.30pm *Weekly every <b>Monday</b> until 23.03.26	Choir with Into the Spotlight * <b>Spaces available</b> *
Tuesday 24 <sup>th</sup> February	National Pizza Week - Special Menu * <b>See Arbor Meals</b>
Wednesday 25 <sup>th</sup> February 9.15am - 10.15am *Weekly every <b>Wednesday</b> until 25 <sup>th</sup> March	Year 1/2 Sparx Session
Wednesday 25 <sup>th</sup> February 3.45pm - 5.15pm	SLSSP Year 5/6 Dodgeball at Lutterworth College * <b>Further details to follow</b>
Thursday 5 <sup>th</sup> March	World Book Day- Special Menu * <b>See details below</b>
Thursday 5 <sup>th</sup> March 3.15pm - 4.15pm *repeats on <b>Thursday 26<sup>th</sup> March</b>	Maths Club with Miss Love
Friday 6 <sup>th</sup> March	Amy Smith Great Athlete Event
Tuesday 10 <sup>th</sup> March 9.15am	Class photographs
Tuesday 10 <sup>th</sup> and Thursday 12 <sup>th</sup> March 3.30pm - 6.30pm	Guardian Consultations * <b>more details to follow</b>
Thursday 12 <sup>th</sup> March 3.45pm - 5.30pm	SLSSP Year 3/4 Dodgeball Tournament at Lutterworth College
Friday 20 <sup>th</sup> March	Red Nose Day * <b>more details to follow</b>
Friday 27 <sup>th</sup> March	Last day of term

### Easter Holiday - 30th March to 10th April 2026 - School re-opens on Monday 13th April

Monday 13 <sup>th</sup> April	School reopens
Tuesday 28 <sup>th</sup> April	KS1 Music Trip to De Montfort Hall
Monday 4 <sup>th</sup> May	School Closed - Bank Holiday
11 <sup>th</sup> - 15 <sup>th</sup> May	SAT's Week
Thursday 14 <sup>th</sup> - Friday 15 <sup>th</sup> May	Scholastic Book Fair * <b>more details to follow</b>
Friday 22 <sup>nd</sup> May	Last day of term

### Summer Half Term Holiday - 25th to 29th May 2026 - School re-opens on Monday 1st June 2026

# National Pizza Day

February 24<sup>th</sup> 2026

**Pepperoni Pizza**  
**Veggie Meatball Pizza** (v)

**Served with**  
**Jacket Wedges & Carrot Sticks**

For Dessert  
**Ice Cream**

*In Italian, "gelato" is the word for ice cream.*



**a PIZZA  
LUNCH!**

